



ROGUE RESEARCH LAB

## Certificate of Analysis

These test results are for Research and Development purposes only

Page 1 of 1

Sample Lemon Cherry Gelato  
Strain

<b>0.15%</b>	<b>0.31%</b>	<b>24.18%</b>
$\Delta 9$ THC	Total CBD	Total Cannabinoids
<b>Not tested</b>	<b>Pass</b>	<b>241.8</b>
Water Activity	Moisture	mg / g Total Cannabinoids

Sample ID **23112141044**  
Matrix **Flower**



Harvest/Prod Date

Report Created

12/1/2023

Results Valid Until

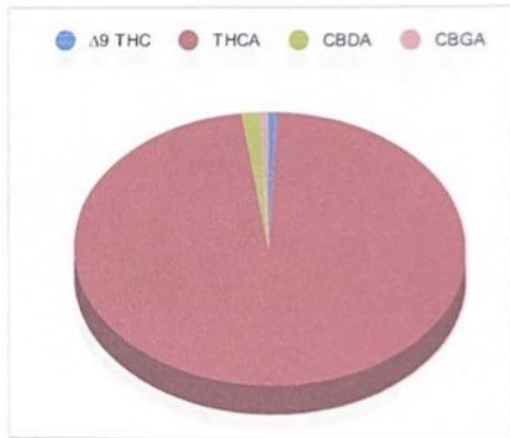
12/1/2024

Sample Extracted  
11/30/2023 10:31:00

Sample Analyzed  
11/30/2023 14:49

Method SOP L0001-R11

Cannabinoids	%Weight	mg/ gram	LOQ(% / w)
$\Delta 9$ THC	0.15	1.5	0.06
THCA	23.50	235.0	0.06
Total THC (THCA*0.877)+9THC	20.77	207.7	0.06
CBDA	0.36	3.6	0.06
CBD	<LOQ	<LOQ)	0.06
CBN	<LOQ	<LOQ)	0.06
$\Delta 8$ THC	<LOQ	<LOQ)	0.06
CBC	<LOQ	<LOQ)	0.06
CBGA	0.17	1.7	0.06
CBG	<LOQ	<LOQ)	0.06
CBDV	<LOQ	<LOQ)	0.06
CBDVA	<LOQ	<LOQ)	0.06
THCVA	<LOQ	<LOQ)	0.06
CBDQ	<LOQ	<LOQ)	0.06
HHC	<LOQ	<LOQ)	0.09



Total THC and Total CBD are calculated values per OAR 333-064-0100. Cannabinoid values for plant matter samples are reported on a dry weight basis. Water activity action level is 0.65Aw. LOQ= Limit of Quantitation. NR=Not Reported.

Rogue Research Lab LLC  
Rogue River, OR 97537 Tel. 541-582-1962

[rogueresearchlab.com](http://rogueresearchlab.com)

Craig Berry - Lab Director  
12/1/23



ROGUE RESEARCH LAB

Results pertain to submitted samples only. Rogue Research Lab LLC makes no claims as to the consumer safety or other risks associated with any detected or non-detected amounts of any pesticides, solvents or other adulterants. This report shall not be reproduced, unless in its entirety, without written approval from Rogue Research Lab LLC. Samples were received in good condition and all QC samples met acceptance criteria of the method; data available upon request. For informational purposes only.